

SEP

ELECTRO-PERMANENT LIFTER FOR HEAVY LOADS



ELECTRO-PERMANENT MAGNETIC LIFTING SYSTEMS



**SAFETY
RELIABILITY
SWIFTNESS
USER-FRIENDLY**

ADVANTAGES OF THE ELECTRO-PERMANENT SYSTEM

The electro-permanent magnetic lifter guarantees absolute safety even in case of power failures.

It doesn't require any backup batteries. The load remains anchored to the lifter for an unlimited time without any alteration of the clamping force.

This system is furthermore energy-saving as it requires the power supply only during the MAG and DEMAG cycles.

The magnetic modules of the **SEP**-series feature a sturdy inner steel structure, as well as high quality alnico and neodymium magnets.

The magnets are arranged in a chessboard pattern by alternating north and south poles, thus generating an adhesive lifting force upon their magnetization.

The well-structured **SEP**-modules, specially designed for the handling of slabs and forged blocks with an increased air-gap, are able to withstand high stresses and strains and are therefore extremely reliable over time.

By means of the radio control included in the standard supply one single user is able to carry out every operation (anchoring, lifting, handling, release) by keeping the necessary safety distance from the load.

Moreover, this lifter ensures an optimization of the working areas as no additional operating space on the sides between one block and another is needed.

RADIO CONTROL

The radio control allows to carry out at a safe distance any control operation (PICK-UP, FULL MAG, DEMAG, SAFE).

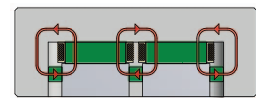
It features a START and an EMERGENCY STOP push-button.

Adjustable frequency, equipped with a battery charger and two rechargeable batteries.

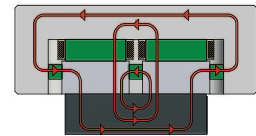
SAFETY-SYSTEM AGAINST AN UNINTENTIONAL DEACTIVATION

Double proximity sensor in order to avoid an unintentional demagnetization with lifted load.

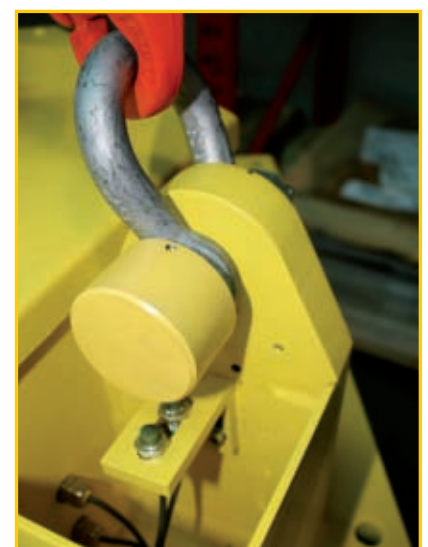
This operation can only be carried out with both slackened chains and load resting on the ground.



DEMAG CYCLE

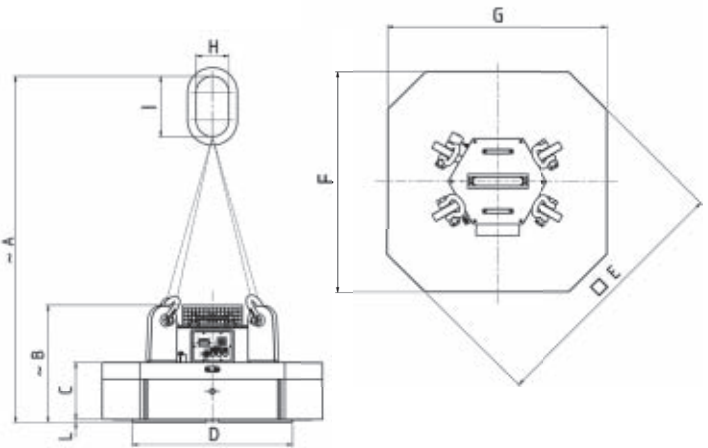
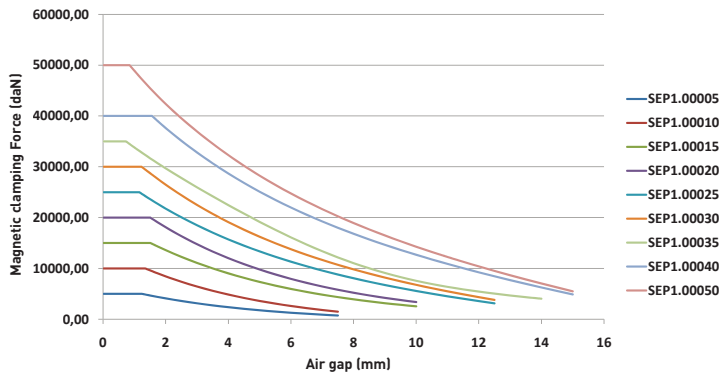


MAG CYCLE





PERFORMANCE GRAPH MAGNETIC FORCE - AIR GAP
Factor of safety = 3:1



LOAD FEATURES

TYPE	Min. thickness (mm)	Min. and max length (mm)	Min. and max width (mm)	Capacity (Kg)
SEP1.00005	35	500 6000	500 3500	5000
SEP1.00010	35	700 6000	700 3500	10000
SEP1.00015	40	800 6000	800 3500	15000
SEP1.00020	40	900 6000	900 3500	20000
SEP1.00025	45	900 6000	900 3500	25000
SEP1.00030	45	1000 6000	1000 3500	30000
SEP1.00035	55	1100 6000	1100 3500	35000
SEP1.00040	90	1200 6000	1200 3500	40000
SEP1.00050	100	1200 6000	1200 3500	50000

DIMENSIONS

TYPE	A	B	C	D	E	F	G	H	I	L	Weight
SEP1.00005	1400	540	190	440x455	750	642	608	100	180	18	700
SEP1.00010	1800	570	220	640x570	987	800	856	190	350	18	1350
SEP1.00015	1850	610	257	719x719	1166	994	994	190	350	18	1950
SEP1.00020	2000	630	280	819x819	1317	1146	1146	190	350	18	2650
SEP1.00025	2100	670	316	851x851	1375	1162	1162	190	350	18	3400
SEP1.00030	2250	685	332	931x931	1502	1282	1282	200	400	18	4050
SEP1.00035	2300	750	382	1000x1000	1600	1376	1376	200	300	18	5000
SEP1.00040	2350	740	384	1024x1080	1669	1467	1403	250	460	20	5850
SEP1.00050	2400	820	430	1100x1140	1870	1600	1540	250	460	20	7600

MANUALLY OPERATED LIFTERS



Sturdy, handy and powerful neodymium magnetic lifters activated by lever.

Suitable for the handling of ferrous loads in various fields of application (loading and unloading on machine tools, oxycutting, warehouses, mechanical assembly, welding, etc.).

Suitable for the lifting of both flat and round loads.

BATTERY-DRIVEN LIFTERS



Battery-driven electro-permanent magnetic lifter for payloads ranging from 500kg to 6000 kg.

Radio control for an operation at a proper safety distance.

Can be employed on any lifting equipment without having to be connected to an external powersupply.

Long-lasting operational autonomy, as the power supply is limited to the MAG and DEMAG cycle, only.

LIFTERS FOR SHEETS



Lifting beams (with or without telescopic arms) able to handle sheets of different sizes, and of small (2mm) or greater thicknesses.

These lifters are operated by a radio control, by means of which also the telescopic arms are extended or retracted.

Possibility to select the center bars for the handling of short sheets or straps.

LIFTERS FOR COILS



Modules for the handling of compact coils of any size and weight.

Offers the advantage of not deforming or damaging the load, and of reducing the operating spaces, as the module is always positioned from above onto the coil.

Suitable for coils with horizontal or vertical axis.



S.P.D. S.p.A.

Via Galileo Galilei, 2/4
24043 Caravaggio (BG) ITALY
Tel. +39 0363 546 511
Fax +39 0363 52578
info@spd.it - www.spd.it



SEP 02/2018